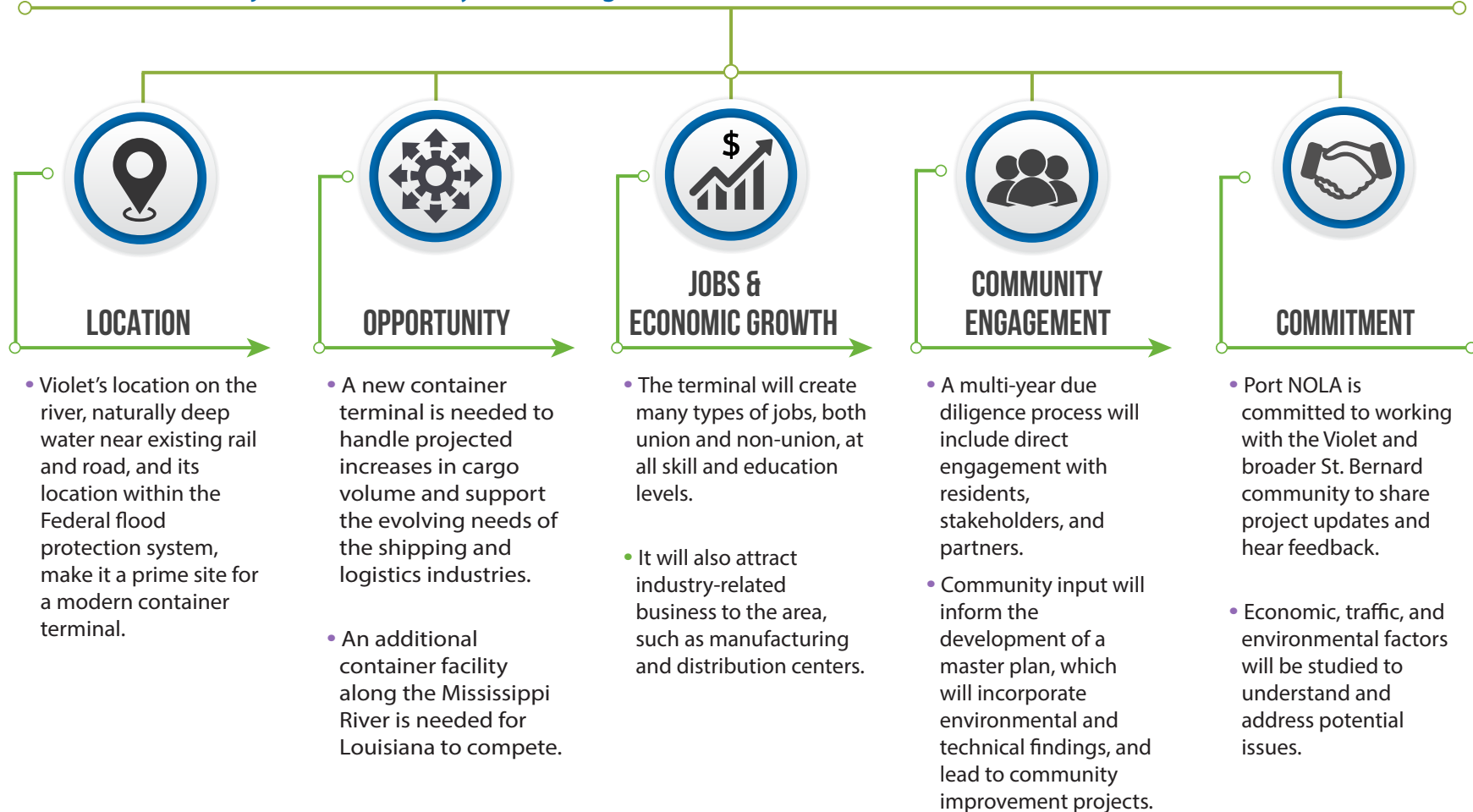


The potential development of an international container terminal in Violet creates the opportunity for new jobs and business in the adjacent community and throughout St. Bernard Parish.



Updated: June 17, 2021

WHAT IS A CONTAINER TERMINAL?

An area where cargo that is already packed in standardized steel shipping containers arrive or depart the port by ship.



Moving items in containers provides safe, efficient, and environmentally friendly transport.



Special equipment such as ship-to-shore gantry cranes are required to transfer containers to and from a ship.



Trains, trucks, and barges deliver containers to and from the terminal so they can be imported or exported and delivered to their final destination.



Container terminals are also used to temporarily store loaded and empty containers.



A terminal operator, a Port tenant, manages cargo activity and relies on its employees, contractors, shipping lines, regulatory agencies and others to move containers where they need to go.

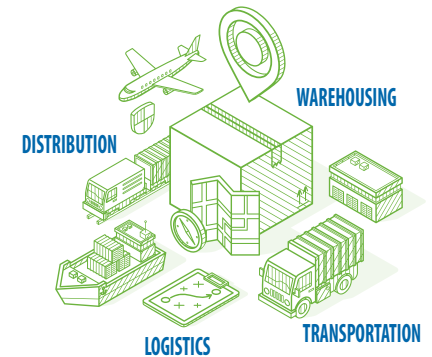
Common Goods Moved Through the Port

Cargo activity benefits consumers, business, and industry in every region of our state.



Container Operations Attract Jobs and Business to the Area

Container terminals attract related business such as warehousing and distribution centers to the area. These businesses save costs and time by being located near a container terminal.



Industry-Related Jobs Created by Terminal Activity

- Clerical/administrative roles
- Crane operators
- Customs agents
- Deckhands
- Engineers
- Equipment operators
- Longshoremen/women
- Maintenance technicians
- Railroad workers
- Safety managers
- Security/IT
- Ship captains
- Shipping/logistics professionals
- Truck drivers
- Vessel agents
- Warehouse workers and more



Port NOLA is committed to open engagement and transparency as the project and more information develop.



Stay up to date at
yourworkingriver.com

Port NOLA will work with industry, education, and economic development partners to promote training opportunities for local residents.